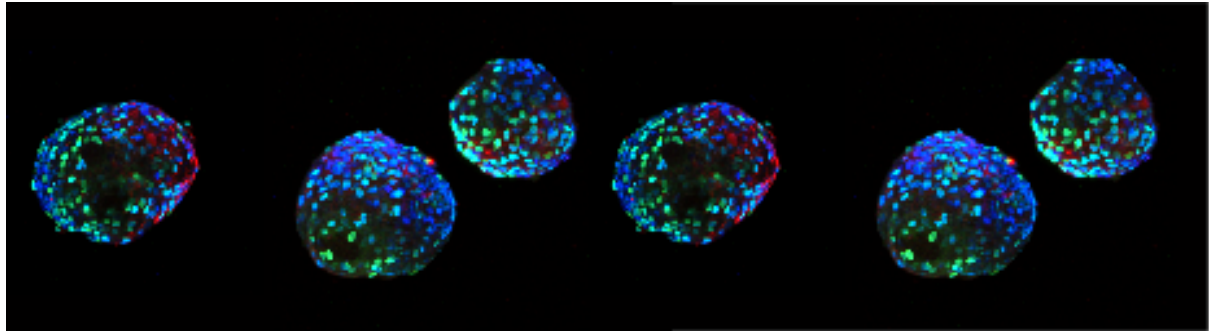


Postdoc positions in pancreas development & stem cells in the Spagnoli Lab King's College London



Two Postdoctoral Research Associate positions (PDRA) are available in the **Spagnoli Lab**, in the Centre for Gene Therapy & Regenerative Medicine at King's College London.

Our team uses interdisciplinary approaches to study pancreas development and islet cell engineering from stem cells. The candidates will be part of a **T1D Grand Challenge**-funded research program aiming at harnessing the islet microenvironment in all its complexity for stem cell therapy of diabetes. <https://type1diabetesgrandchallenge.org.uk/funded-projects/making-transplanted-beta-cells-feel-at-home/>

This is an **exciting interdisciplinary research program** that will require expertise in stem cell culture, human tissue, bioengineering, computational analytical methods, and islet transplantation. Applicants should have a recent Ph.D. degree or have submitted their Ph.D. thesis. We wish to appoint highly motivated individuals: **one PDRA with background in development and stem cell biology** and **one PDRA with background in stem cell biology and animal model transplantation**.

The Spagnoli lab. is coordinating the multi-partner, interdisciplinary consortium and will be primarily responsible for developing innovative approaches to closely mimic key features of the native islet microenvironment using stem cells. The candidates will be leading these efforts and help in developing this ambitious research program.

We are a highly dynamic, inclusive team, doing exciting science and member of the Centre for Gene Therapy & Regenerative Medicine at King's College London, UK. This is a world-class research environment with all facilities essential for this ambitious research program.

Interested candidates should get in touch with **Francesca Spagnoli** (francesca.spagnoli@kcl.ac.uk) for further information. Please send your CV, research interests, and names and contact information of three references. **Link to application:** [Research Associate - King's College London \(kcl.ac.uk\)](https://www.kcl.ac.uk/research-associate)

Positions will be available starting in **Summer 2024**.

More information on the group, publications and research topics in the group can be found in the laboratory website: <https://www.spagnolilab.org/>



TYPE 1
DIABETES
**GRAND
CHALLENGE**

DiABETES UK
KNOW DIABETES. FIGHT DIABETES.

JDRF IMPROVING
LIVES.
CURING
TYPE 1
DIABETES.

Steve Morgan
FOUNDATION